



Brazilian Synchrotron  
Light Laboratory

# MXCuBE at Sirius



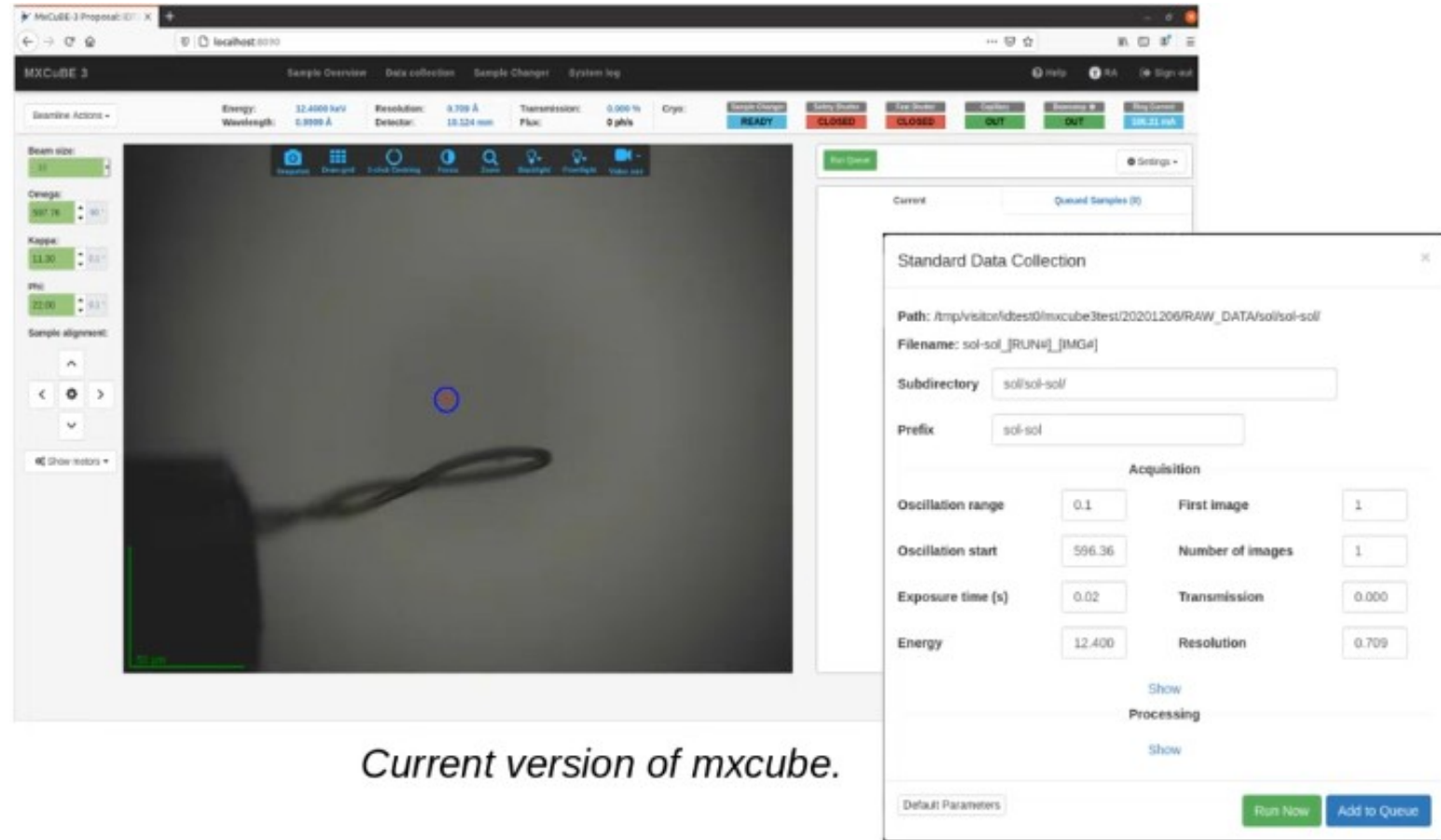
**Letícia Garcez Capovilla**

Beamline Software Group (SOL)  
Brazilian Synchrotron Light Laboratory (Sirius/LNLS)

# MXCuBE 3

## Done

- ✓ EPICS classes
  - ✓ EPICS Motor Class
  - ✓ EPICS Actuator Class
  - ✓ EPICS N State Class
- ✓ MXCuBE plug and play (environment & application)



*Current version of mxcube.*

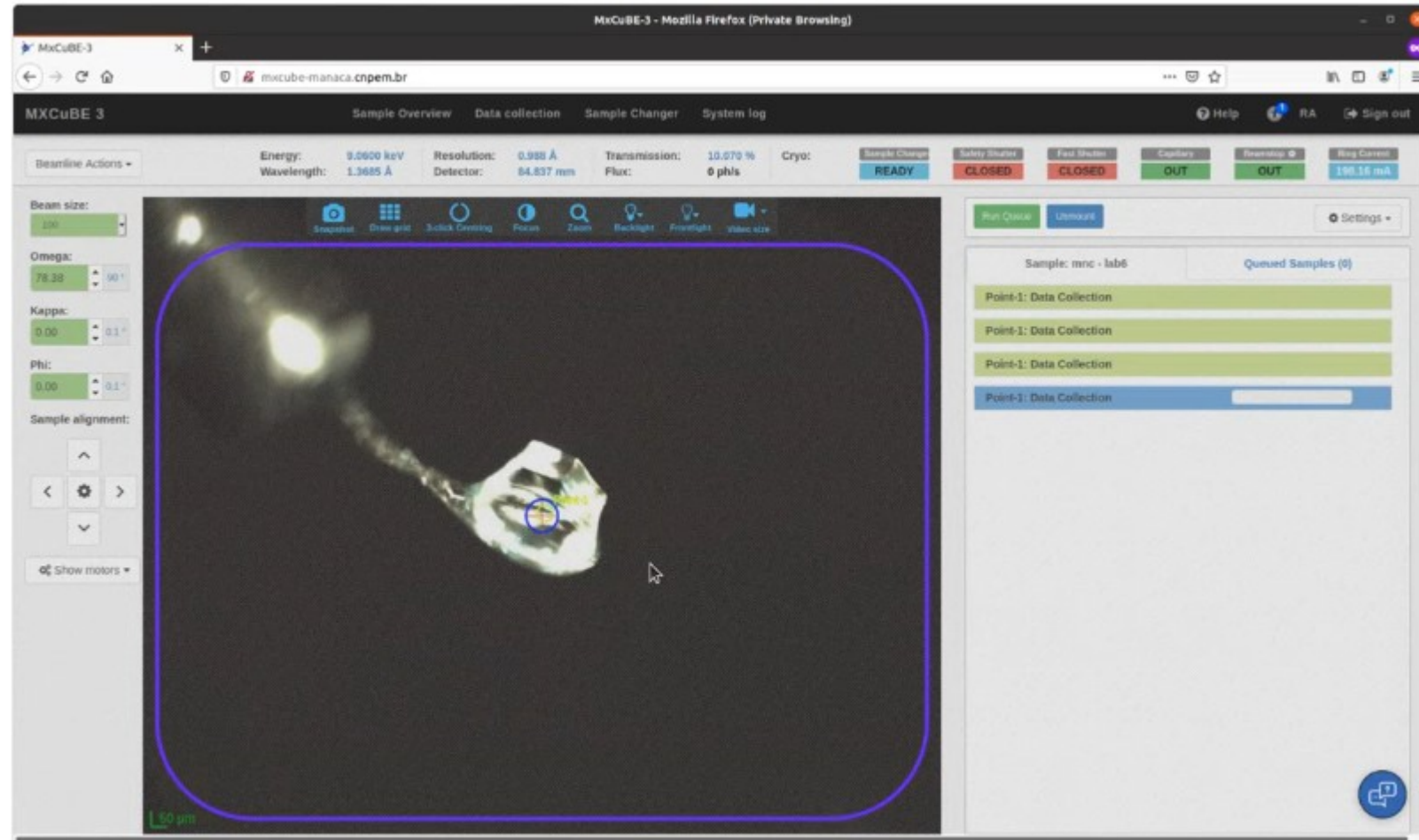
# MXCuBE 3 at Manacá beamline

## WIP

- Grid scan and serial crystallography
- Remote access improvement
- Stop/Kill collect debug

## To-Do List

- Bragg diffraction visualization system



# MXCuBE 3 at Cateretê beamline

## Done

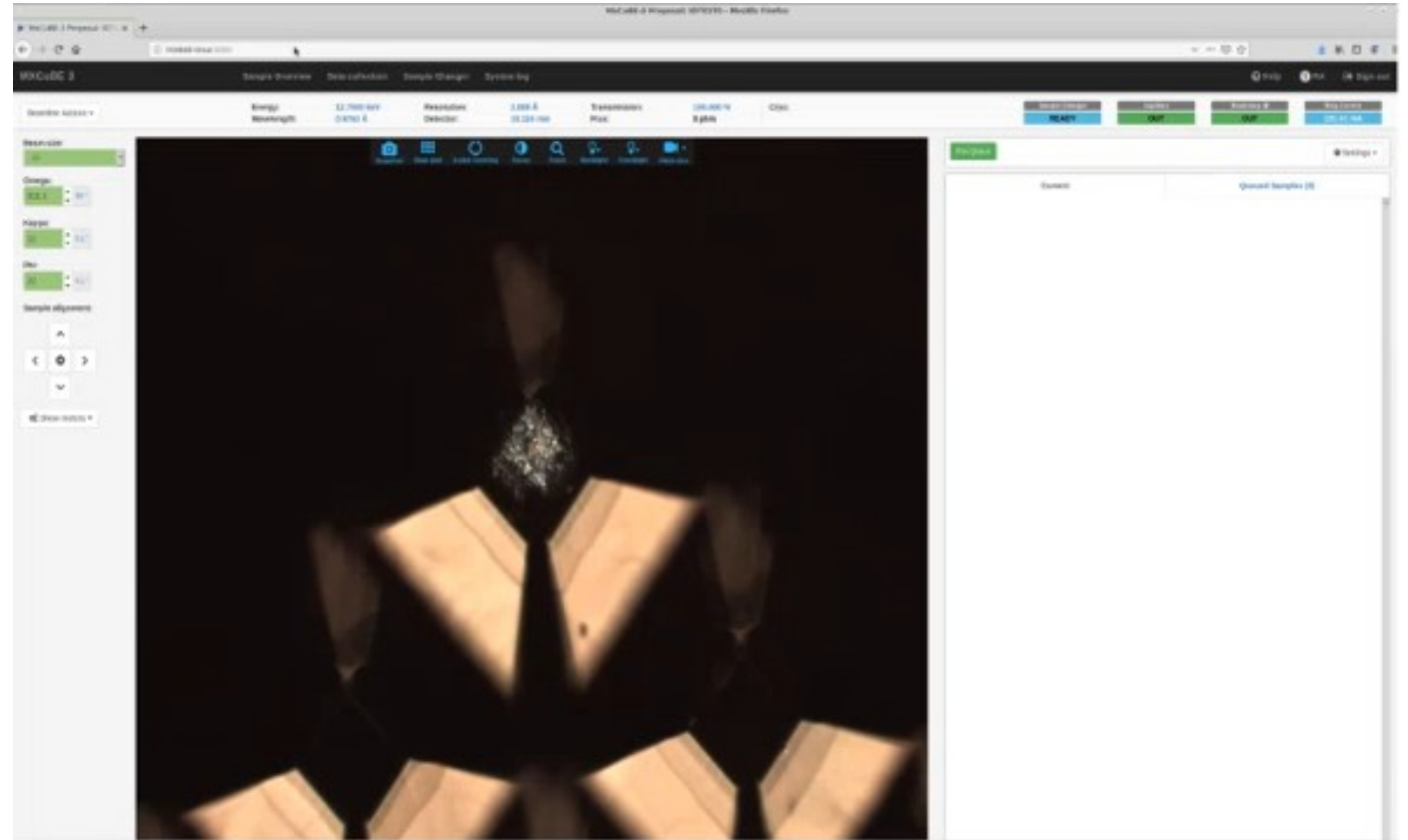
- ✓ Camera visualization (Arinax Bzoom)

## WIP

- Motors integration

## To-Do List

- Calibration
  - Go to beam
  - 3-click centring



*Sample view (Bzoom) test at CATERETÊ.*

## To-Do List

- MXCuBE 3 base update
- Incorporate container to the main project

## Future Ideas

- Daiquiri Framework
- MXCuBE 3 Deploy at Ema and Mogno beamlines



# Acknowledgement



- **Beamline groups**
- **Support groups**
- **SOL group**
- **MXCuBE community**



**Thank you all!**



MINISTRY OF  
SCIENCE, TECHNOLOGY  
AND INNOVATIONS

